

# Taylor Wimpey

Former Wisley Airfield

Community Liaison Group  
Meeting 11

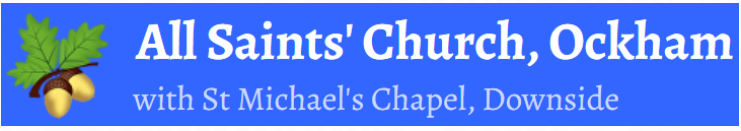
Topic: Planning Programme Update

17<sup>th</sup> June 2021

# Agenda

- —● Introductions
- —● Planning Process
- —● Planning Update
- —● Planning Timeline
- —● Q&As

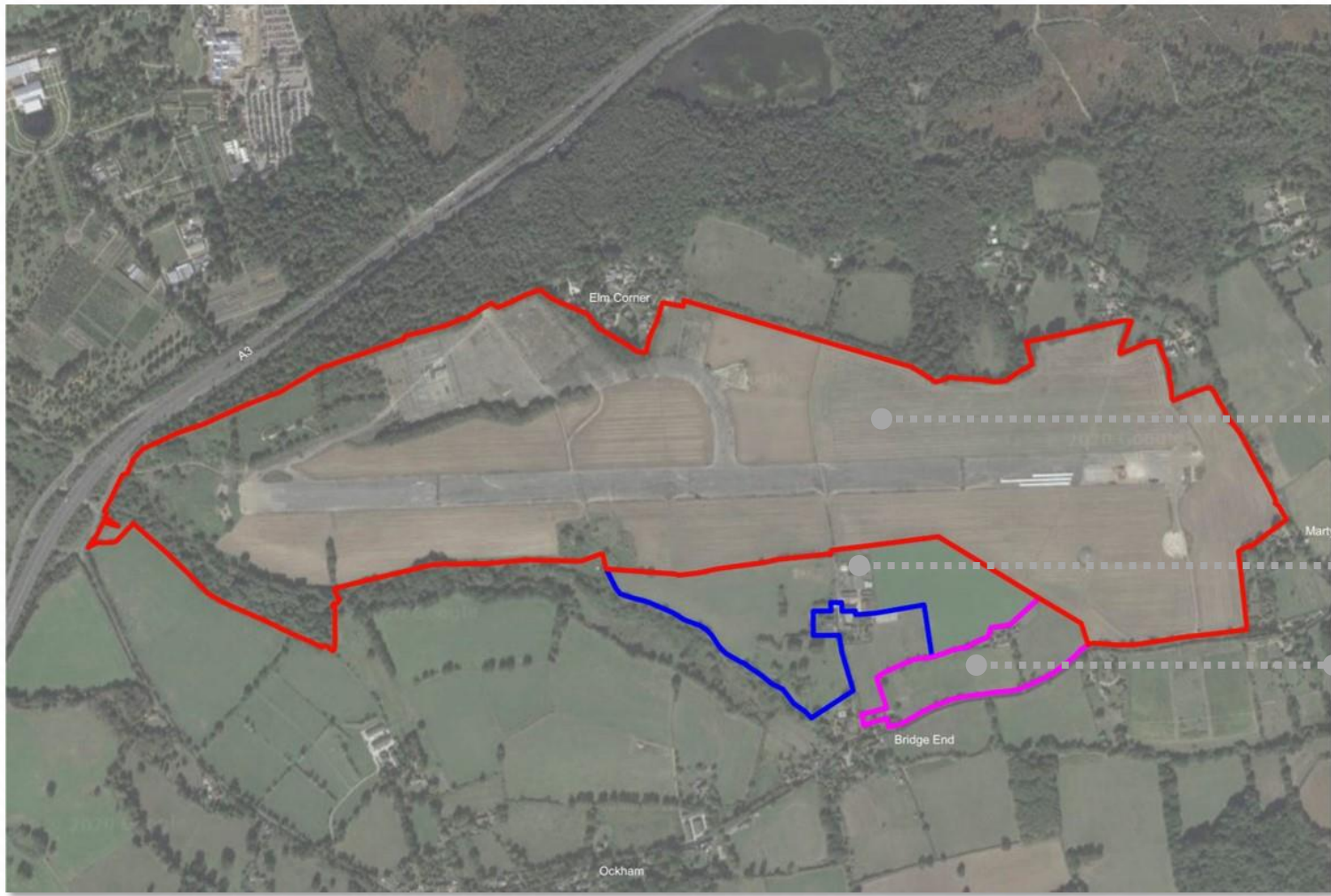
# Introductions





# Planning Process

# Masterplan Area



**Taylor  
Wimpey**

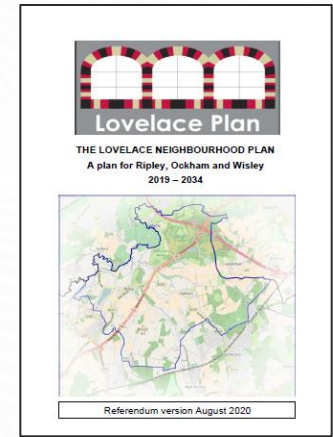
**CBRE**

 **Hallam Land  
Management**



# The Development Plan

- Guides development in Guildford Borough Council:
  - The Adopted *Local Plan* (April 2019);
  - Saved Policies GBC *Local Plan* (2003); and
  - The *Lovelace Neighbourhood Plan* (referendum expected 2021).
- The Development Plan is supported by a suite of Supplementary Planning Guidance including:
  - The *Strategic Development Framework SPD* (July 2020);
  - The *Climate Change, Sustainable Design, Construction and Energy* (September 2020)
- Material Considerations:
  - *National Planning Policy Framework* (February 2019);
  - The emerging *Development Management Policies* document (due to be adopted September 2022)



# The SDF SPD Process

Guildford Borough Council guidance for strategic sites allocated in the Local Plan (2019)

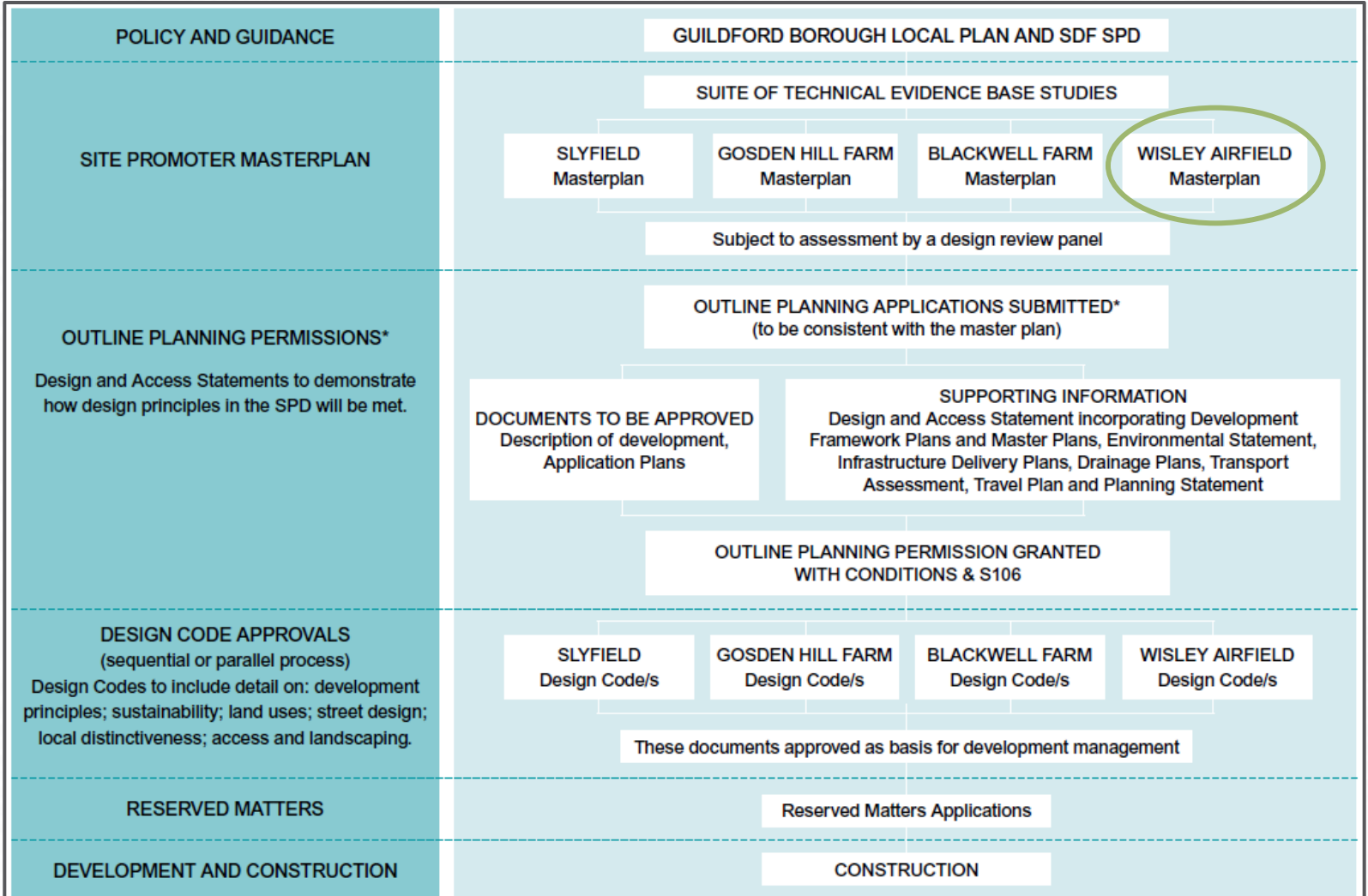


Fig 2: Anticipated planning and design process

\*Recognised that may also be hybrid application.

# Planning Update



# Planning Update

- Highways England Development Consent Order decision delayed until November 2021
- Third public consultation held May 2021
- Third Design Review Panel held May 2021
- Consultation held on off-site cycle routes
- Lovelace Neighbourhood Plan has gone through referendum

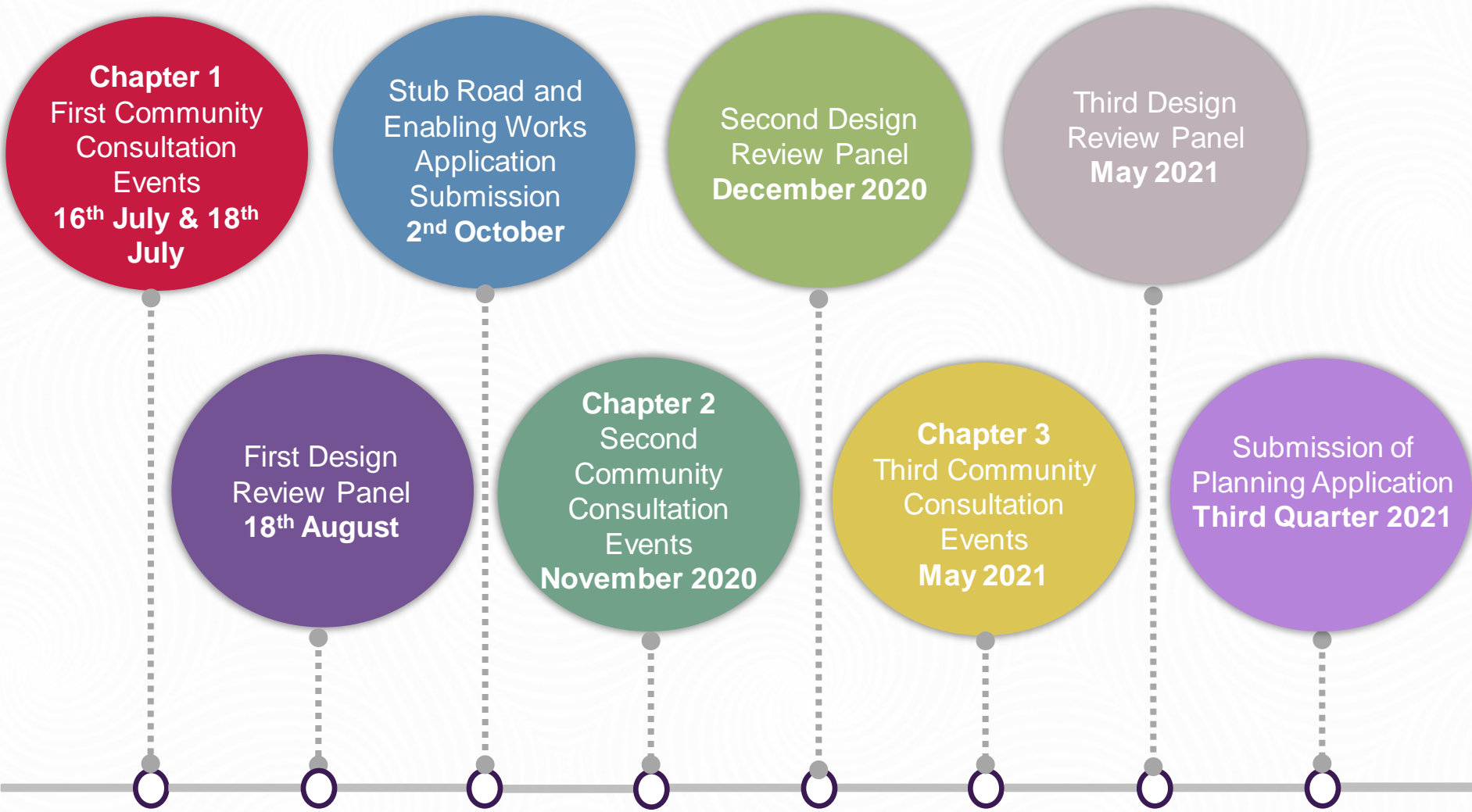
# Planning Update

Application	Update
1. Stub Road Application	Recommended for approval at Planning Committee  Deferred due to delay to DCO decision
2. Enabling Works Application	Determination period with GBC Working towards Planning Committee Q2/Q3 2021
3. Hybrid Planning Application	Submission of SANG in detail to ensure early delivery  Submission Q3 as per latest consultation to take account of completion of transport model

# Planning Timeline



# Planning Timeline





# Next Topic

Next Meeting Date & Topic to be proposed by group



Thank You

# Iconography



# Iconography

