

Taylor Wimpey

Former Wisley Airfield

Community Liaison Group
Meeting 13

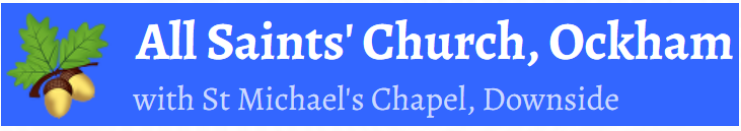
Topic: Planning & Transport Update

30th September 2021

Agenda

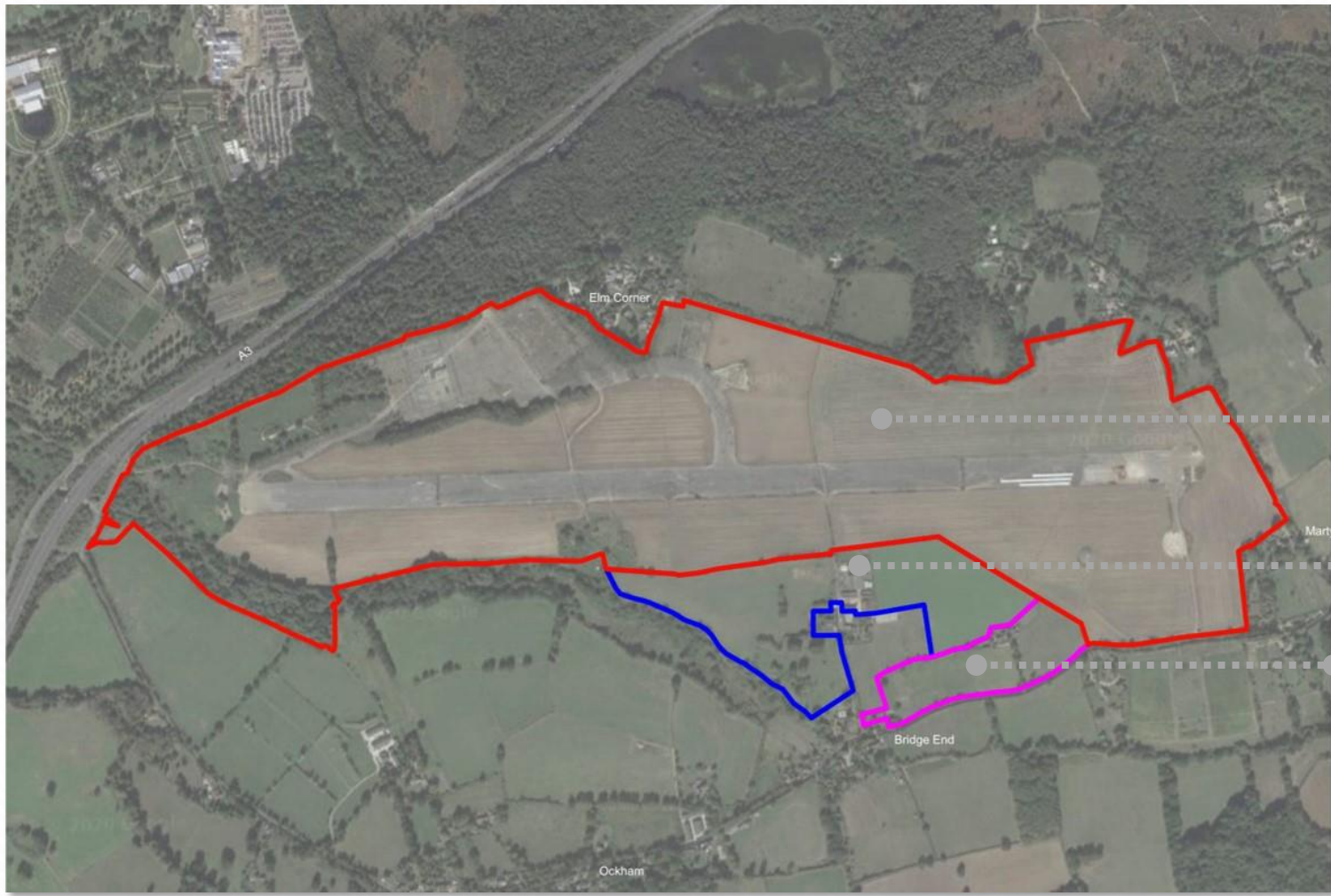
- —● Introductions
- —● Planning update
- —● Next steps prior to submission
- —● Overview of transport proposals
- —● Q&A

Introductions



Planning Update

Masterplan Area



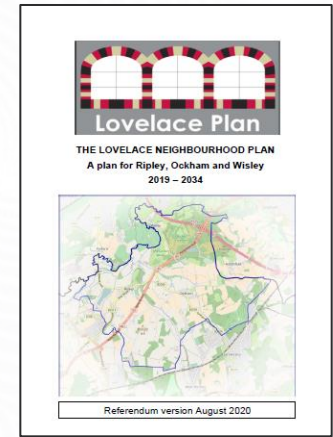
**Taylor
Wimpey**

CBRE

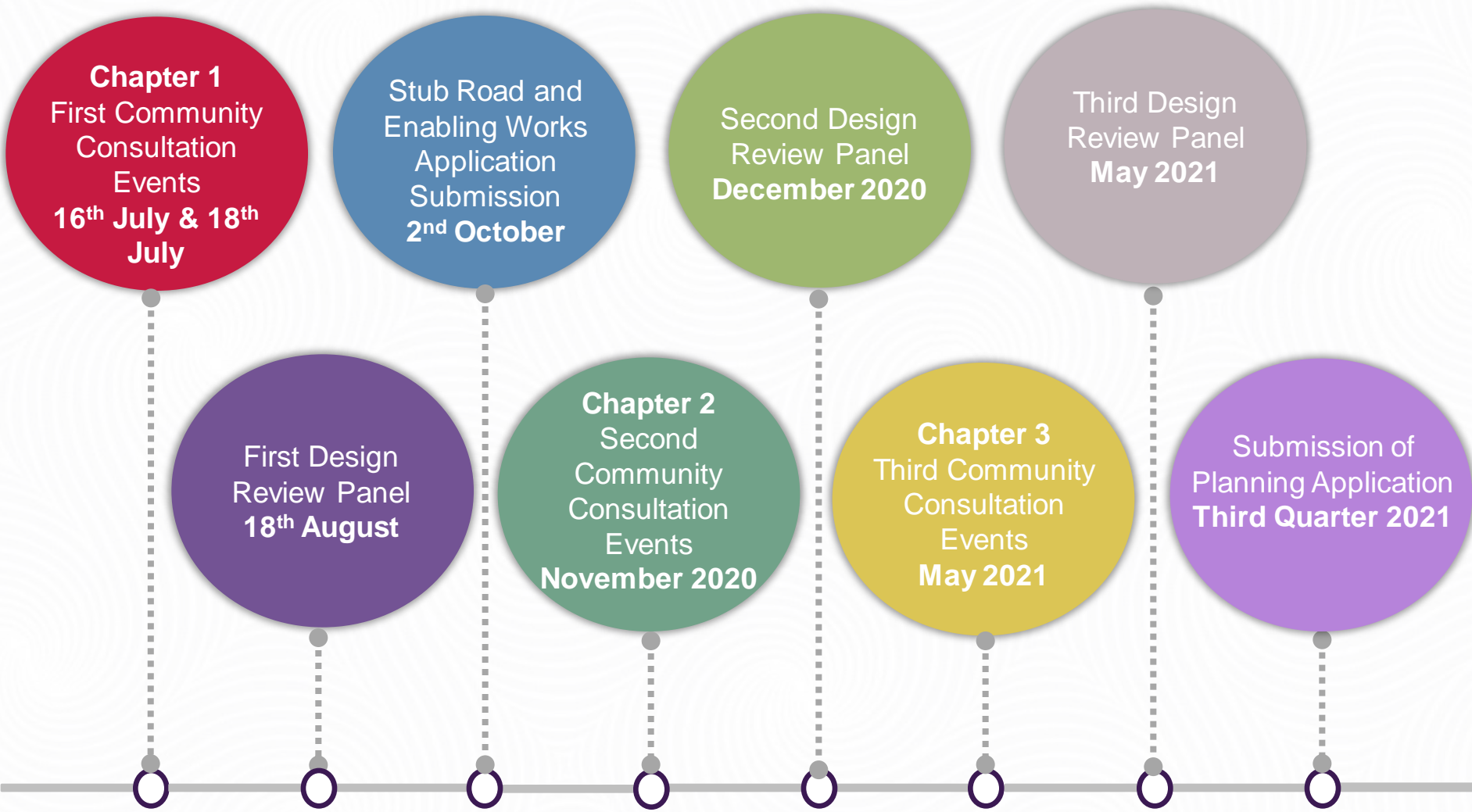
 **Hallam Land
Management**

The Development Plan

- Guides development in Guildford Borough Council:
 - The Adopted *Local Plan* (April 2019);
 - Saved Policies GBC *Local Plan* (2003); and
 - The *Lovelace Neighbourhood Plan* (referendum expected 2021).
- The Development Plan is supported by a suite of Supplementary Planning Guidance including:
 - The *Strategic Development Framework SPD* (July 2020);
 - The *Climate Change, Sustainable Design, Construction and Energy* (September 2020)
- Material Considerations:
 - *National Planning Policy Framework* (February 2019);
 - The emerging *Development Management Policies* document (due to be adopted September 2022)



Planning Timeline



Next steps prior to submission

Planning update

Application	Update
1. Stub Road Application	Recommended for approval at Planning Committee Deferred due to delay to DCO decision
2. Enabling Works Application	Determination period with GBC Working towards Planning Committee Q2/Q3 2021
3. Hybrid Planning Application	Submission of SANG in detail to ensure early delivery Submission Q3 as per latest consultation to take account of completion of transport model

Overview of transport proposals

Overview of transport proposals



Next Topic

Next Meeting:

Transport Update

September 2021 (date TBC)

Thank You

Iconography



Iconography

